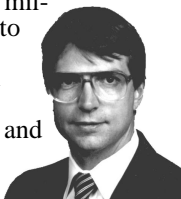


President's Message

By Bill Smith

As we approach the new millennium, we are pleased to announce Windows versions of four of our most popular programs, REFRIG, DUCTSIZE, ECA and FIRE. We are especially proud about the release of DUCTSIZE for Windows, our flagship program for optimal sizing of hvac duct systems.



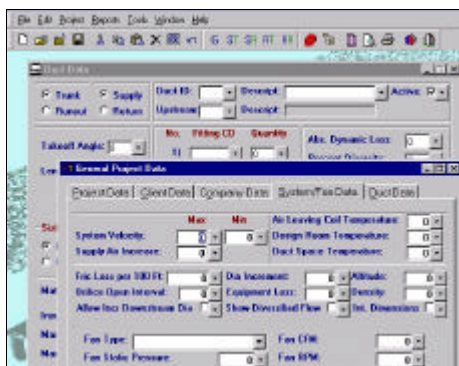
These programs are the product of many months of work and contain substantial improvements you are sure to enjoy. For current users, upgrade prices are modest and the programs are well worth your consideration. Start the new millennium right and update your programs for optimal performance – call us at (800) 648-9523 and we'll explain the advantages of updating, new features, charges, etc.

We are also working on a new stand-alone drawing program called "Elite CAD" to draw quick architectural floor plans and schematic designs for duct systems. When finished, it will work easily with our CHVAC, DUCTSIZE and RHVAC programs.

ACCA is scheduled to release an updated copy of Manual J very soon. When it's released, all of its new procedures and capabilities will be incorporated into our residential load calculation program, RHVAC. An update will then be immediately available. This update will either be free or nominally priced. Watch our website, and the HVAC press, for release dates and more information.

Our AUDIT program for residential energy analysis has recently received some nice improvements as it can now model 2 speed air conditioners and 2 speed furnaces. This update can be downloaded free from our website. Our FIRE program for fire sprinkler hy-

(Continued on page 3)



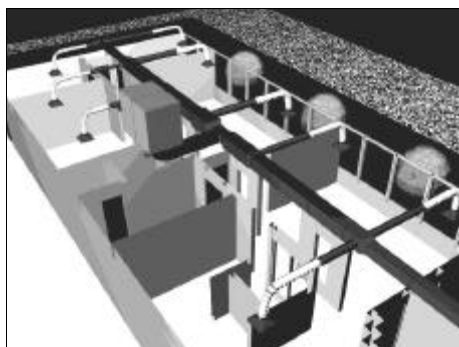
New Windows Version of DUCTSIZE

DUCTSIZE 6.0 quickly calculates optimal duct sizes for supply and return systems using either the static regain, equal friction, or constant velocity method. The calculated duct sizes can be printed on a round, rectangular, and flat oval basis. Noise levels and required attenuation are printed for each runout duct. A library of fan data for noise calculations is built into the program.

NEW!



DUCTSIZE allows multiple duct systems in a project and is suitable for both constant volume and VAV systems as diversity is accounted for. Input data is entered using convenient "fill in the blank" screens. Optionally, input data can be taken directly from a duct drawing file created with AutoCAD. The AutoDesk HVAC drawing module



(Continued on page 2)

New Programs and Updates

New Windows Versions

DUCTSIZE 6.0 for Windows – Super fast and easy calculation of optimal duct sizes using either the static regain, equal friction, or constant velocity method.

REFRIG 3.0 for Windows – Calculates the maximum refrigeration load in btu's per 24 hour period for all types of refrigeration applications.

ECA 4.0 for Windows – Fast calculation of the pipe loop length necessary for heating & cooling a building with a given heat pump, soil, and weather conditions.

FIRE 6.0 for Windows – Performs all necessary hydraulic calculations as required by the National Fire Protection Association (NFPA 13). *Now Includes Pumps!*

Pending Windows Versions

HSYM 2.0 for Windows – Analyzes centralized HVAC piping systems that use chilled and/or hot water.

HEAVENT 7.380 – For industrial exhaust ventilation design, redesign, & balancing.

ECOORD 3.0 for Windows – Aids in the selective coordination of fuses and circuit breakers.

New Programs

IAQ TOOLS 1.0 for Windows – Solves "sick building" problems concerning a wide variety of airborne contaminants, ventilation & filter design and more.

VENT TOOLS 1.0 for Windows – Shows how proper ventilation can solve indoor air quality problems.

INDOOR HUMIDITY TOOLS 1.0 for Windows – Helps solve & understand indoor humidity problems.

HVAC CAD DETAILS – A collection of 227 ready-to-use CAD detail files.

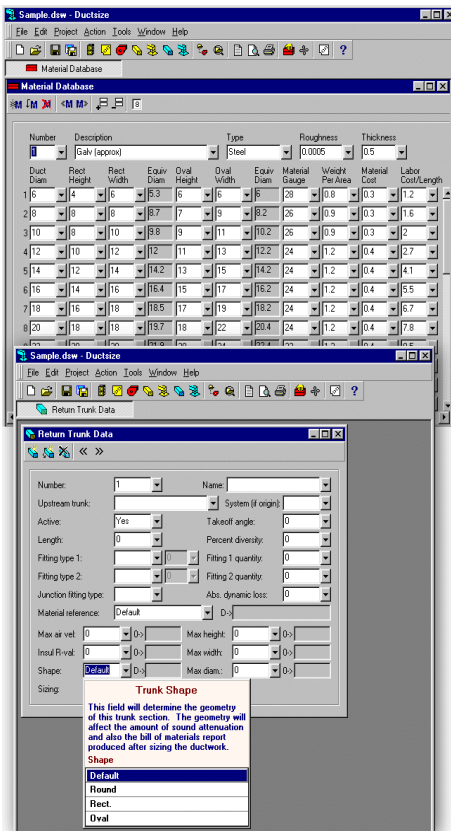
(DUCTSIZE continued from page 1)

is required in addition to the basic AutoCAD program for the data link to DUCTSIZE to work.

Important new features include a Project Explorer that provides a tree-style graphical representation of all trunks and runouts in the project. DUCTSIZE now lets you connect any number of downstream ducts to a trunk. This is aided by a new capability that lets the user enter a plenum instead of a junction fitting for a trunk. An unlimited number of separate duct systems can be entered in a single project; the number of trunks and runouts is also virtually unlimited. In addition, both supply and return duct systems can be entered in the same project. Return-side duct system losses are automatically accounted for when calculating the supply side duct system.

DUCTSIZE reports are now completely customizable and can be printed, previewed on screen and saved to disk. Reports can optionally be generated as an HTML file that can be viewed with a web browser. DUCTSIZE can use either English or Metric units. DUCTSIZE 6.0 starts at \$295. The update cost from DUCTSIZE 5.0 is \$195. A fully operational evaluation version of DUCTSIZE can be downloaded free at our website, www.elitesoft.com.

DUCTSIZE reports are now completely customizable and can be printed, previewed on screen and saved to disk. Reports can optionally be generated as an HTML file that can be viewed with a web browser. DUCTSIZE can use either English or Metric units. DUCTSIZE 6.0 starts at \$295. The update cost from DUCTSIZE 5.0 is \$195. A fully operational evaluation version of DUCTSIZE can be downloaded free at our website, www.elitesoft.com.



REFRIG for Windows

REFRIG 3.0 quickly calculates the maximum refrigeration load in btu's per 24 hour period for all types of refrigeration applications. REFRIG has provision for all kinds of loads including: roofs, walls, partitions, floors, products, containers, infiltration, lights, equipment, people, defrost, compressor run-time, and safety factor loads.

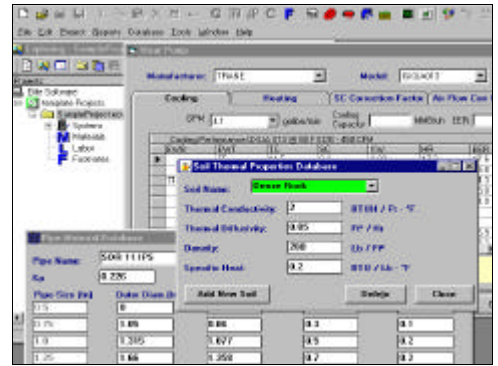
Design weather data is built-in and automatically looked up for over 1,500 different cities. Product loads are easily accommodated as REFRIG contains a built-in library of products (fruits, vegetables, meats, etc.).

REFRIG comes with over 400 coils and 400 condensing units from various manufacturers such as Carrier, Krack, Witt, Russell, and others. Up to 1,000 coils and condensing units can be stored per manufacturer.

REFRIG offers all the powerful benefits that you expect from Windows programs. Simultaneous views of multiple data screens, point and click data entry, hypertext help information, numerous colorful graphics, and presentation quality reports are all present in this new release.

REFRIG 3.0 costs \$395. The update cost from REFRIG 2.0 is \$195. Full information and an evaluation version are available free for downloading at our website: www.elitesoft.com.

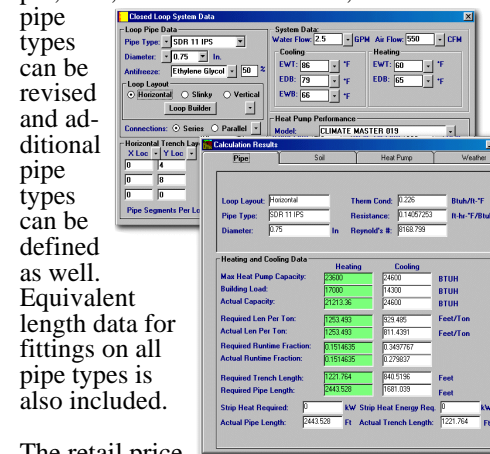
Have you changed your company name, address, telephone number or email?
Call us at (409) 846-2340 and let us know.



ECA for Windows

NEW! ECA 4.0 quickly calculates the required pipe loop length necessary for heating and cooling a building with a given heat pump, soil, and weather conditions. ECA can analyze both vertical and horizontal pipe systems. In addition to computing pipe lengths, ECA can also generate a complete bill of materials with a cost estimate of the required labor and materials. Pressure losses through the equipment room, heat pump, header pipe, and the earth coil are computed along with the purge pressure and flow requirements.

New features include easy-to-edit databases for heat pumps, weather, piping, fittings, and soil, use of rated, adjusted, or manually input heat pump capacity and efficiency values, manual entry of earth loop length and the ability to make changes and recalculate to see results change instantly on-screen. ECA is supplied with built-in data on many pipe types including polyethylene, polybutylene, copper, iron, and others. However, data on all pipe types can be revised and additional pipe types can be defined as well. Equivalent length data for fittings on all pipe types is also included.



The retail price of ECA 4.0 for Windows is \$395. The update cost from ECA 3.0 is \$195. An evaluation version is available free for downloading at our website: www.elitesoft.com. Call 1-800-648-9523 for your ECA update today!

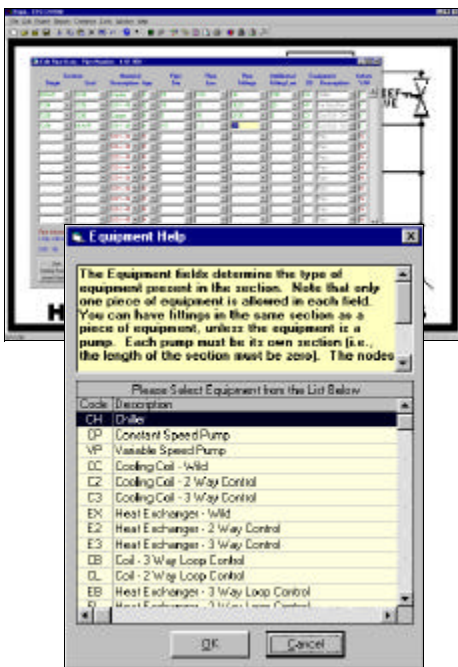
HSYM 2.0 for Windows analyzes centralized HVAC piping systems that use chilled and/ or hot water. In the simulation of HVAC water piping systems, HSYM can determine pressure losses, actual operating pressures, temperatures of air and water, flow rates, and obtainable unit loads throughout the system. Complex systems containing all types and sizes of pipe, insulation, boilers, chillers, pumps, coils, exchangers, 2 and 3 way control valves, water temperature control valves, radiators, and insulation can be defined. HSYM provides a cost effective way to obtain a steady state analysis of an existing or a proposed system. With HSYM a designer can investigate a myriad of design alternatives in search of an optimal design that provides low cost and reliable performance. HSYM calculates extremely fast and performs extensive error checking of the pipe network system.

NEW!



New features include a built-in library of pipe materials with a full range of pipe sizes and many built-in pipe fittings, all fully customizable. Users can instantly error check the entire system before calculation, see a list of potential problem areas, with warnings and actual errors reported.

HSYM is still in beta test right now, but a new release will be available soon. Check our website www.elitesoft.com for a public beta copy and the latest information on the status of HSYM.



HVAC DETAILS – A Collection of 227 Ready to Use CAD Detail Files

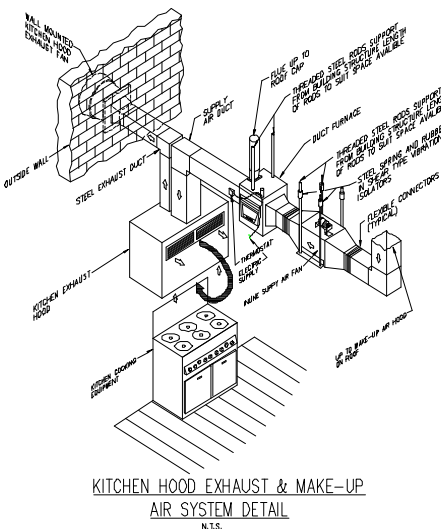
HVAC Details are the most complete set of CAD HVAC details available on the market today. Unlike other CAD HVAC packages which have only details, HVAC Details includes standardized schedules, notes and symbols.

Therefore, with this set of details, the HVAC Engineer has a strong foundation from which to assemble his design drawings. These ready-to-use HVAC CAD details are an excellent addition to your CAD drawings library and will save you many hours in drawing time. Our HVAC CAD Detail files are



provided in both .dwg and .dxf file formats. They are fully editable and are also supported by most CAD programs on the market today. HVAC CAD Details is only \$350.

Many representative samples of these CAD files along with a comprehensive listing can be viewed at our website, www.elitesoft.com. Note: HVAC Details are not intended to be the sole source of information relied upon for the design of HVAC systems. In preparing design drawings, the engineer's judgment and experience should be the basis on which all decisions are made.



Visit Elite's Internet Site to Stay Informed & Up to Date

With the popularity of the internet, Elite's website now gets about 15,000 domestic and international visitors per month. Our website is the best place to get up-to-the-minute information about all of our products and activities.

Latest announcements and breaking news, new Windows releases and updates, timely technical articles, full program information, conference exhibitions, tons of industry links and much more can be found on our website. Best of all, every one of our 32 programs can be downloaded free of charge for evaluation with no time limit. Maintenance software updates and accessory programs are there as well for free downloading.

With the immediacy of the internet, Elite is producing fewer printed newsletters. So be sure to bookmark our site, www.elitesoft.com, and visit often. Feel free to email us at info@elitesoft.com.

(President's Message continued from page 1) draulic calculations now has the ability to model pressure increases in the fire protection system due to the presence of a fire booster pump. This allows modeling of fire protection systems where the city water main has insufficient pressure to drive the system by itself. The update cost from FIRE 5.0 is \$195

ECOORD for fuse and breaker coordination is now being developed for Windows and will be a substantial improvement over our old DOS version. CHVAC, our great program for commercial load calculations, is also undergoing a redesign to make it run faster and improve its performance.

For all these new developments, it's best to watch our website, www.elitesoft.com, for up-to-the-minute announcements and releases. Of course, you can always call us at (409) 846-2340 for the latest news on any of our programs. *Happy holidays and best wishes for a prosperous year 2000 from all of us at Elite Software!*

Elite Software

P. O. Drawer 1194
Bryan, TX 77806

Bulk Rate
U.S. Postage
PAID
Permit No. 95
College Station, TX

Address Correction Requested
Return Postage Guaranteed



See us on the internet at www.elitesoft.com

Orders: 800-648-9523

Technical Support 409-846-2340

Fax: 409-846-4367

Email - New 979 Area Code

Elite Software wants to keep you better informed on program updates and pending new releases. Although we will continue to use all the traditional methods such as magazine press releases, printed newsletters and website announcements, nothing can accomplish this goal better than email. Email is fast and easy. Plus, it is no problem handling any number of people at your company. To get all the people you want to receive email from Elite Software on our list, send an email to news@elitesoft.com containing all the email addresses that you want listed as recipients.

Beginning in February of 2000, the area code for Elite Software will change from 409 to **979**. As usual, the old area code will work for awhile, but around July 2000 the old area code will not work anymore. So to make sure faxes and technical support questions continue to make it through to us, please make note of this change.

Even with email, Elite will still send regular newsletters. Look for more soon.

Program Version Numbers

Elite Software continually develops new software and performs enhancements to existing software. Listed in the adjacent column are the current programs with version numbers that Elite Software sells and supports.

The retail price of each program is listed to the right of each version number. Several of the programs are available at different levels each with a different price. If you would like more information about any of these programs please call or visit our website for a free demo. Ideally, you should check all the pro-

grams you currently have from Elite Software against these version numbers. Even more current version numbers can be found on our website. If you are unable to determine your version numbers, just give us a call as we maintain complete records on all of our customers.

If your program version numbers match the ones to the right exactly or differ only in the last decimal place, then you have current versions.

However, it is always wise to have the very latest version of a program right down to the last decimal place. If you have any program with a version number differing **ONLY** in the hundredth's place or greater from the latest program version number, then you can order a CDROM update to that program for just \$20. Alternately, you can download the update for free from our website. If your program version numbers differ in the ones or the tenths place, then you have missed one or more official update releases. Unlike the minor updates, official updates have more than a \$20 cost and they are cumulative. In such cases, you need to contact Elite Software for the total amount required to update the software to the latest version.

Besides the benefits obtained by the powerful new features offered in updates, there is one other very important reason for purchasing updates: **SUPPORT**. Elite Software can only support one version behind the current version of any program. If your copy of a program is more than one official update behind the current version, then you cannot call Elite Software for help on using the old software. You will need to update versions to maintain support privileges. Program updates are priced very reasonably. You will always find it worthwhile to maintain your investment by keeping your programs current.

Program Names and Prices

AUDIT (Standard)	6.07.35	\$ 495
(With appliances)	6.07.35	\$ 595
(With appliances & disaggregation)		\$ 795
CHVAC 2 Zone	6.03.13	\$ 295
CHVAC 10 Zone	6.03.13	\$ 395
CHVAC 50 Zone	6.03.13	\$ 595
CHVAC 100 Zone	6.03.13	\$ 995
CHVAC Unlimited	6.03.13	\$1495
DPIPE	1.12	\$ 295
DUCTSIZE Eq. Fric.	6.01.5	\$ 295
DUCTSIZE EF & SR	6.01.5	\$ 495
ECA	4.00	\$ 395
ECOORD	2.06	\$ 995
EZDOE	2.10	\$1250
GASVENT	2.06	\$ 195
FIRE 50 Sprinklers	6.00.32	\$ 495
FIRE 200 Sprinklers	6.00.32	\$ 795
FIRE 1000 Sprinklers	6.00.32	\$1250
HEAVENT	7.380	\$ 495
HSYM	2.00	\$ 995
HTOOLS	3.00	\$ 249
HVAC CAD DETAILS	N/A	\$ 350
IAQ TOOLS	1.00	\$ 345
INDOOR HUM. TOOLS	1.00	\$ 495
INPOINT	5.10	\$ 695
LIFE	2.02	\$ 149
LIGHT	4.21	\$ 495
OUTPOINT	5.10	\$ 595
PANEL	1.15	\$ 695
PSYCHART	2.01.16	\$ 195
QUOTE	2.00.19	\$ 395
REFRIG	3.00	\$ 395
RHVAC	6.07.68	\$ 495
SHADOW	1.21	\$ 195
SHORT	4.18	\$ 595
SPIPE	1.20	\$ 495
VENTILATION TOOLS	1.00	\$ 495
VDROP	2.18	\$ 295

Please note that version numbers can change quickly – some may have changed by the time you read this newsletter.